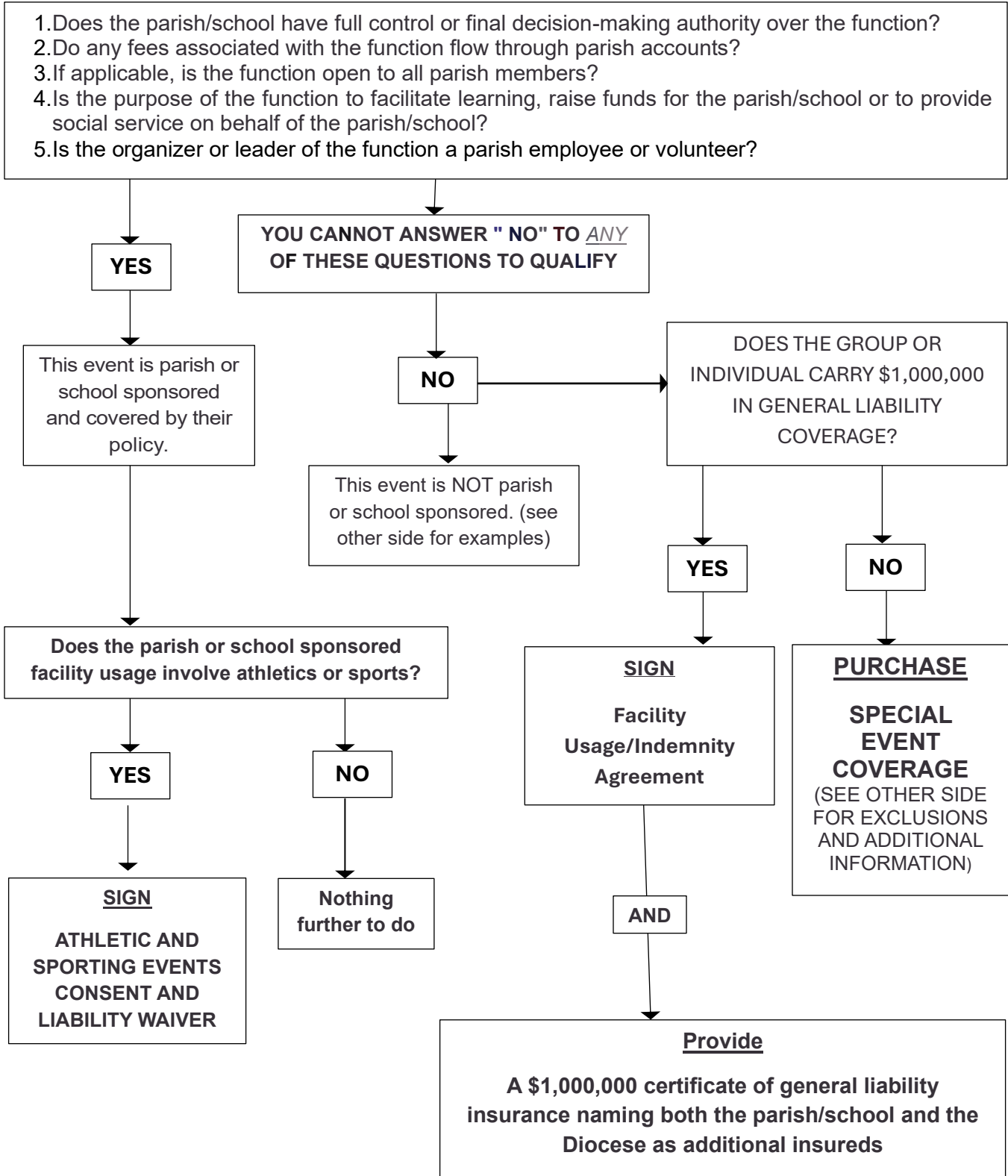


# When is it a Non-Parish Sponsored Event?



# When is it a Non-Parish Sponsored Event?

## Examples of Non-Parish or School Sponsored Events

(Please note that funeral luncheons are parish sponsored events.)

- Boy Scouts, Girl Scouts, Knights of Columbus, American Legion, Cursillo or other similar organizations that use parish facilities for meetings or fundraisers.
- AAU sport teams or non-parish sponsored sport classes/clinics.
- Parishioner and non-parishioner families that rent or use parish facilities for wedding receptions, family reunions, anniversary parties or other similar activities.
- Any other organization, municipality, city or county organization that uses parish facilities for a meeting or function that is non-parish sponsored.

### **EXCLUS IONS TO COVERAGE:**

Coverage does not apply to certain events and exposures, such as, but not limited to:

- Any type of carnival event.
- Fireworks & firework displays.
- Events involving BYOB (bring your own bottle).
- Events involving pools or lake activities.
- Events involving recreational vehicles.
- Non-religious musical performances/concerts (contact CMG for special exceptions).
- Events organized or operated by professional promoters/performers.
- Organized sporting events, including tournaments & camps.
- Events where a fee or admission is charged unless all proceeds go to charity.
- Political rallies.
- Amusement rides, including mechanically operated devices, trampolines & rebounding devices.
- Claims related to an epidemic/pandemic.

### **ADDITIONAL INFORMATION FOR COVERAGE:**

- Host Liquor Liability is included, however, if alcohol is being sold or is included in the cost of a ticket, a supplemental application must be completed and there will be an additional charge. The supplemental application can be requested through CMG.
- Any events involving bounce houses or any inflatable amusement devices will have a separate charge in addition to your standard event charge.
- An event is considered 72 hours or less. If an event exceeds 72 hours, another event must be purchased.
- Events that exceed 1,0000 people in attendance.
- Events involving overnight stays have a flat charge of \$125.
- If Sexual Misconduct coverage is needed, a separate application can be requested from CMG.